

Star★Types
Life Path Report
Putting Yourself to Good Use



Astrological Profile for: Chart Report-Sample
by Michael Erlewine



Welcome to Life Paths

Index

- 1 [Welcome to Life Paths](#)
- 2 [The Heavenly Kaleidoscope](#)
- 3 [Reading Your StarType](#)
- 4 [Your Vocational StarType](#)
- 5 [In the Workplace](#)
- 6 [What About Money?](#)
- 7 [The Natal Chart](#)
- 8 [Chart Summary](#)
- 9 [Social Skills](#)
- 10 [Relationships](#)
- 11 [Job Placement](#)
- 12 [Business Skills](#)
- 13 [Polarities](#)
- 14 [Getting the Most](#)
- 15 [StarType Families](#)

Welcome to Life Paths



Welcome to 'Life Path' astrology, a personal report about finding Chart's vocation, the right path for her to succeed in life. Making a living, making our way through life, is something that each of us has to do and we don't always know what we really want to do until we find it. Many of us end up working at a job we did not really choose and for which we might not be all that well suited for or that will not make us all that happy.

Perhaps we have been educated, learned this or that particular skill, and already have some idea what we are good for and can do. We may or may not have had this or that kind of schooling or training, but that does not automatically mean that what we are doing for a living now is the only thing we can do or that we will be all that fulfilled doing it. What is Chart really good for? How might she be best put to use in this life? What would Chart be actually happy doing? These are the kind of questions that this report can be helpful at answering.

Astrology provides another look at Chart's vocational options, regardless of what she already thinks of herself or is doing for work, a second opinion and fresh take. The Life Path Report is designed to describe the basic role Chart tends to take on in life, her overall approach to work in this world, and how she might be most useful to herself and others. Being useful, being used in a way that is satisfying is one of the main keys to happiness. This report is designed to help put Chart in touch with her own core abilities and to sketch out an approach to work that should be natural for her.

You might ask: how can astrology, which links what is happening out there in the heavens with what is happening down here on earth possibly be useful in vocational matters? The answer to that question might well take an entire book, but let me try to give you some understanding of the approach taken in this report.

The Heavenly Kaleidoscope



The orderly movement of the planets around our Sun create an ever-changing, almost kaleidoscopic, series of patterns in the heavens which are actually quite beautiful. It is not that these patterns dictate or influence what takes place in our lives down here on Earth, but rather that the entire cosmos, the heavens and our Earth, are part of one time and space, one great cosmic dance. When some major planetary pattern forms out there in the heavens, something similar is happening down here in our lives as well. We are part of whatever is going on out there. We are inside it. It is all one universe we share, and somehow we are in synch here on earth with what is taking place out there. We all are dancing to the same tune.

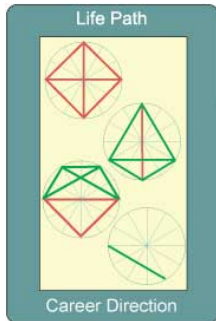
This is even clearer if we look at an astrological chart of the patterns in the heavens at the moment of Chart's birth. We see that all of the heavenly patterns taking place up there can be boiled down to form a few general archetypes (I call them StarTypes) that we can recognize. These StarTypes are associated with certain qualities that individuals here on earth have and act out in day-to-day life. The "Life Path Report" is based on interpreting these patterns for a particular birth, patterns which can help describe how to approach life. It is Chart's StarType patterns that are being interpreted here.

But this report may also require an effort to read between the lines and take what can be general observations and apply them to Chart's particular situation.

Note: At the very end of this report is a section on understanding the different types of StarType patterns. In some sections of this report, they will be referred to by name of the configuration (i.e. The Grand Trine), and also by their colored borders: green, red, blue, and rose. So please refer to that section for more details.

Chart's chart has what we call a "Hands-on" StarType, one that often excels working with people as a part of a team. For example, Chart might be currently working in a managerial position, which is traditionally more isolated. This can be read in more than one way. It might suggest that she would be happier in a non-management position, or it could also suggest that she is doing more people-like and teamwork-oriented activities in the management job that she now has. In other words, while the Life Path report will show inclinations, it is up to each of us to see how those inclinations can be applied.

Reading the StarType



This is primarily a vocational report rather than a personal profile, but a brief natal description is included later on, so you may want to consult that. Here we will be describing Chart's overall approach to life and work.

Next, let's take a look at the general or overall approach that Chart takes to life. Here we are not trying to get down to specifics as much as we want to give a broad sketch of the role she might take in life as regards making a living.

With vocational analysis, a lot depends on the role we play in the workplace, and today's work environment traditionally has been divided roughly into several types. The most common division in the modern workplace is between the manager or supervisor types (organizational, mental, managerial, etc.) and the workforce (hands-on, take-directions, production) types.

And in between management and the workforce, there is a third type, what has been called the mid-level manager or independent type. These are the mediators or go-betweens for both the Manager and Hands-On types, and they often serve as the mouthpiece for either the workers or for management. Using this traditional division, first let's see what general work type is for Chart's chart:

This Vocational StarType

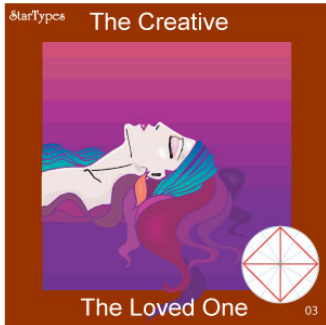


Chart has a "Hands-on" StarType, which puts her into the "worker" or workforce category, those who actually get the job done. Chart can take direction and put the pedal to the metal. While the more managerial StarTypes tend to be cool, calculating, and somewhat distant, the "Hands-on" StarType is always right in the center of the action, often well-loved by her teammates, and someone who often demands and usually gets lots of attention from those around her. And this is as it should be, for Chart tends to be warm and for the most part gregarious. She can exude charm and is often the centerpiece of any group. Chart is a people person.

Chart's particular type is usually popular and people love to be with her because she is not self-conscious, insists on having fun, and she pretty much guarantees you a good time. If you are in trouble and need advice, seek out the cooler, more intellectual StarTypes, but if you want a dinner partner or just to have some fun, grab one of these hands-on types like Chart, for that is when the fun starts.

As mentioned, Chart is above all a "people" person, and she likes to get right in there and work a crowd, glad-handing with the best of them. She radiates charisma and can shine in almost any setting. Of course, this StarType makes the best salesmen, because she sells herself just by being with you. Who can resist? And her type is so very watch-able. This does not mean she always has the best visuals, but regardless of how she looks, she is magnetic and charismatic. She shines, and everyone just loves to be around her and to spend time with her.

Lest we think that life is all roses for Chart, let's touch on her darker side. For all her social-ness, she can be very private and guards her privacy. She does not like to be crowded and really hates to be boxed in. Perhaps because of this she is always in such demand, Chart is in her own way a bit claustrophobic.

And these 'hands-on' StarTypes like Chart tends to worry about their intelligence, perhaps because she is so simple and direct in her appeal. She feels everyone loves her for her shine and sparkle, but not for her intellect. There is some truth to that, of course, and this can be somewhat of a problem for this type, because she hates to appear stupid. In fact, she often will go to great lengths to study and go to school, collecting learning degrees, diplomas, and whatever makes her appear more refined and sophisticated. Chart's StarTypes likes fine and frilly things, and is quick to put on airs, to appear more sophisticated than she, in fact, is. This can be a lifelong problem.

And she can at times lack awareness. She tends to see the trees, but not always the forest. Chart can have real problems grasping the big picture and sometimes is wise to seek out the advice of the management StarTypes, who can give her direction, and help her to better see where she is going in life.

In dynamic relationship roles, ones that involve real interaction, Chart's StarType inevitably takes the part of the workers, those that need looking after. These are high maintenance types, so do take note.

Chart is a rare bird, of great value to any company or venture. First, she is warm and charismatic to be around. People naturally like her and very much enjoy being with her, spending time with her. Here is a hands-on, intuitive, feel-your-way-along person, who has an innate sense of things and savvy that is the envy of others. More important perhaps, she can have an enormous effect on any project or group she plays a part in, and is a kind of natural stimulus for others, like a kind of an idea wishing-well. She is a valuable team member and worker. Chart thinks with her heart, not her head. Contact with Chart can produce real and important changes in how a project will go.

Chart can be very stubborn and almost impossible to move off a position. While brilliant intuitively, she may have problems with higher-level management, in particularly with planning, seeing the big picture in advance, scooping out the future. Chart tends to be warm and gregarious, but not always thoughtful and considerate.



In the Workplace

In these next two sections, we will first consider how Chart fits into the workplace and then some more personal observations. What we will point out here is something about Chart's talents and how they might relate to various career approaches.

Synopsis:

Chart is warm, gregarious, and friendly, the life of the party, and the object of attention much of the time - a people person.

The Seed

Pros: Chart is a rare bird, of great value to any company or venture. First, she is warm and charismatic to be around. People naturally like her and very much enjoy being with her, spending time with her. Here is a hands-on, intuitive, feel-your-way-along person, who has an innate sense of things and savvy that is the envy of others. More important perhaps, she can have an enormous effect on any project or group she plays a part in, and is a kind of natural stimulus for others, kind of an idea wishing-well. Contact with Chart can produce real and important changes in how a project will go. She is a valuable team member and worker.

Cons: Chart is very stubborn and almost impossible to move off a position. While brilliant intuitively, she has problems with higher-level management, in particularly with planning, seeing the big picture in advance, scooping out the future. She tends to be warm and gregarious, but not always thoughtful and considerate.

With Co-workers

Chart is warm and gregarious, one who is at home in a group setting, and very much a one-on-one touchy-feely person. She is very much relationship oriented and, due to her innate warmth and friendliness, tends to need (and get) a lot of attention. Chart is one of those "in the moment" people, who lives for today, and probably does not look too far toward the future. She has superb intuition, almost a psychic sense when it comes to picking the wheat from the chaff, getting to what is important.

Notes: Chart tends to be stubborn and hard to budge on issues, takes life one thing at a time, and probably has trouble grasping the big picture. She is a high maintenance type, meaning she requires a lot of attention and is used to being cared for, rather than being the more caring one.

What About Money?



A question all of us want and need to know is just how are we going to come by success and will we have any money? What follows consists of simple answers to a few basic questions and then a kind of quick summary of Chart's money making opportunities. "Dumb Luck" means you are just plain lucky and things fall into your lap. "Social Money" indicates that you can or will get money through your people connections and social skills. "Hands-on-Money" suggests that you make your money the old-fashioned way, by hard work, practical effort and ideas, and "Mind Money" points to making money and being successful by using your mind and intellectual gifts. None of this is written in stone, but in general, these factors points to how you may best be able to be successful and generate income.

Dumb Luck:

Yes, naturally lucky.

Social Money:

Yes.

Hands-on Money:

At times, yes.

Mind Money:

No.

Chart is just naturally lucky and quite liable to fall into money or find money and wealth coming her way. And that is not all. She may also generate money through contacts and rubbing shoulders with those who already have wealth and connection. Chart will find that her natural charm and charisma can bring her into the circles where she can be successful. However, money through concepts and mental ideas (the mind) would probably be a risk.

The Natal Chart



Now, putting career and workplace to the side, let's look at Chart's personal makeup, how she might approach friendships and romantic relationships, plus something about her overall approach to life.

First: Chart is a rare bird. This StarType seldom comes up, and it is probably the single most useful (and used) of them all, she should prepare to be accessed. Folks like Chart are born with information somehow embedded in their very physical fabric, information of enormous use to others, and the world they find themselves living in. She is one of these and the keyword for this StarType is 'seminal,' so take note. Chart's influence will be felt by everyone who comes to know her and almost everything she touches will bring results, but not always for her, personally,

And this too is important: Chart's gifts doesn't depend on what she thinks or says, not even in how she appears or what she does. Think about that for a moment. It is what we ARE that is important and the information (if we can call it that) that Chart carries embedded in her very genes and self. Chart has only to make herself available and helpful to others for them, and whatever they represent, to benefit and take advantage of what she carries locked in her makeup. Sounds like a sci-fi film, right? Sorry. Let me try to say it more simply:

Chart communicates, by her very nature and presence, information and ideas that activate and stir up the general process of life - start things. Think "catalyst." From contact with her, ideas arise and come into the mind and thus (eventually) into being through mere proximity to her. Again: this is non-verbal. It does not matter if Chart is nice or not nice. It just happens. She is a catalyst.

Relationships are not only important to Chart, but are of crucial importance. By nature, she is intuitive (perhaps even psychic at times), very much feeling her way along and through life by using her gut sense, and whatever hunches she may have.

Another way of saying this is: Chart sees the trees way more than the forest. She hungers to get more perspective and to better grasp the "big picture." To help with this, relationships come to the rescue. Since she is strong in intuition and natural savvy, she would benefit from partners that can bring her some of the overall perspective that she likes, in particular the green StarTypes, like #5 and #60. But any green type will probably bring some benefit.

Relating with these green StarTypes, perhaps even working closely with them, in a business or personal way can help Chart develop better overall vision, perspective into her life, her capabilities, and what best to do with her life - what route to take.

Intuitive to the point of tunnel vision, Chart's sense of whether things feel right or wrong is profound. Everyone who knows her benefits from this natural instinct for the truth, and she exerts a seminal influence on all she comes in contact with.

The price she pays for this gift, is that she sometimes gets lost in the trees, and can't see the forest, or she has trouble seeing the big picture and remembering what this life she is living is all about.

Therefore Chart can benefit from the more pure types of 'The Lover' StarType, in particular the Grand Trine and the Kite, who will help her to better understand what she is going through, who she is, and to perhaps guide her in day-to-day decisions. Look for the Grand Trine pattern, which is the large green triangle.

As for the blue-bordered cards, keep in mind that they have the qualities of both the red-bordered and the green-bordered cards within their makeup. When relating to them, Chart will want to invoke the care-giving and advice giving aspect of them. She will call out the lover in them, with her being the loved one that they care for.

KEYWORDS

Beyond words.

Innate intuition.

Non-verbal.

A seminal influence.

The Loved One.

Charismatic.

Center of Attention.

Intuitive.

Touchy Feely.

Chart Summary



There is no use in just offering a list of professions, like: butcher, baker, candlestick maker, because even each of those professions has all kinds of levels and functions. For example, I could say to you that the 'baking' industry would be a good bet for a person. But in that industry, there are all kinds of job functions aside from just kneading the bread. Aside from the bread makers, there are the fine pastry makers, the oven experts, wholesalers, retailers, salespersons, and so on all connected to the baking profession.

Instead, in here we will concentrate on some general skills Chart has that can be applied to any industry or profession. For example, is Chart better at using her mind or would she rather be physically involved working closely with people and things? Is Chart analytically inclined or more creative and intuitive? Does she prefer to let other people supervise and have those responsibilities or does she enjoy the responsibilities management brings? It is these kinds of questions I will try to sum up here and they can relate to almost any kind of work or business.

SKILLS:

Intuitive, Creative, People Skills, Glad-Handing, Practical, Sales, Group Leader

LACKS:

Analytical Skills, Conceptual, Organizational, Management, Supervisory, Mental, Appraising

**Social Being:**

Chart is very much a social being and quite at home in a group. Hobnobbing and making friends comes naturally.

Meet & Greet:

Chart is the archetypical glad-hander, perfectly at home meeting and greeting other folks in a social situation.

Sensitivity:

Chart is not sensitive or shy in social situations, and is naturally gregarious.

Wallflower:

Not at all.

Private:

Chart is, despite her social skills, actually quite private when it comes down to it.

Direct/Indirect:

Chart is friendly, but not usually that candid or direct.

Collegial:

Chart is almost always collegial and friendly.

Self-Confidence:

Chart is naturally confident.

Relationships



Relationships:

Chart needs relationships.

Romantic Role:

Chart likes to take on the role of "the love one" or object of affection in a relationship.

Office Role:

In an office environment, Chart is happiest in a creative or non-management position.

Independent:

No.

Interdependent:

Yes.

Needy:

Yes, in relationships.

Job Placement



Business type:

Practical.

Responsible:

Does not enjoy responsibility much.

Management Skills:

Not so much.

Salesperson:

Yes..

Teamwork Skills:

Yes, great.

Advisor:

No.

Supervising:

No.

Business Skills



Communication Skills:

Yes, at group and people communication.

Intuitively Creative:

Very creative.

Work Ethic:

Likes some freedom of movement.

Analytical Skills:

Not Chart's forte.

Organizational Skills:

Not the best.

Detail Work:

Not natural.

Thoughtful:

Not so much.

Smart:

Better creatively.

Intellect:

Not so much.

Interpersonal Skills:

Very good, hands on.

Problem Solving:

Not so much.

Group Leader:

Yes, good.



The following is a simple list of polarities (many traditional) as they relate to Chart and her particular StarType. These are included on the case that the earlier material is not sufficiently clear on. Perhaps looking at Chart through this list of polar opposites may help make things more clear and provide a better feeling for this person. Here is the list:

Host or Guest:

Prefers the role of guest.

Impress/Express:

Likes to express.

Watcher/Watched:

Watched.

Reason/Intuition:

Intuitive rather than reasoning.

Careful/Careless:

Tends to be careless.

In/Out:

In and wants out.

Evolve/Involve:

Wants to be evolved.

Subject/Object:

Assumes the role of object.

Lover/Loved One:

Likes the role of the 'Loved One'.

Mental/Physical:

More physical than mental.

Self-Conscious?:

Not particularly.

Sensitivity or Lack-of?:

Can lack sensitivity.

Awareness Factor:

Not so much.

Vertigo/Claustrophobia:

Claustrophobia.

Foresight/Hindsight:

Hindsight.

Seeing/Feeling:

Feeling.

Reasonable/Unreasonable:

Unreasonable.

Yin/Yang:

Yang.

Subtle/Dense:

Dense.

Spirit/Flesh:

Flesh.

Service Factor:

Likes to be served.

In/Out:

Inside looking out.

Active/Passive:

Active, like Judo.

Getting the Most Out of Your Life Path Report

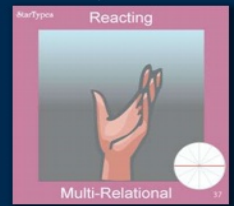
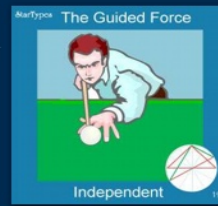


This report is designed to offer a second opinion, an alternate look at the talents Chart has and what kind of approach to work and career might be most natural for her regardless of what she may have trained for or currently be doing.

What she reads here may provide a somewhat different approach to career than Chart has envisioned for himself, so take time to let it all sink in. Keep in mind that a career is more than just a job. A career is a life-path, literally the path or way each of us goes through our life, and it can make all the difference if we are doing something that resonates with our natural talent, that uses us as we like to be used, as opposed to working at a job that goes against our natural grain.

Sometimes a simple adjustment in approach can make the difference between the happiness of a successful and happy career and a job for which we are not suited and was never meant for us in the first place. It is my sincere hope that this Life Path Report may provide information that is helpful in evaluating and making career decisions.

Learn more about StarType Families



StarTypes analysis excels in vocational and relationship analysis and it can be useful to know something about each of the four most common relationship roles that StarType covers, these roles indicated by the red, green, blue, and rose-colored borders of the StarType cards. Let's go over the basic relationship types.

First let's make sure that we are clear about what we mean by relationship, and this holds true for all relationships: lovers, friends, not-so-friends, co-workers, and even not-so-friends..

Any relationship of two persons, given time, usually resolves itself into one of four main general styles or types, in which each partner in the relationship takes on a particular role. Of course, the two classic roles are that of the "Lover" and the "Loved One," as in Romeo is the lover and Juliet is the object of his love or loved one. A more modern way of saying this might be that in most relationships, someone picks up the dirty socks (lover or caretaking role) and someone lets the socks lay there (loved one or taken-care-of role). StarType analysis is quite accurate at showing you ahead of time who is likely to be the Lover and who the Loved One. To make it easier, we use four colors to mark the four major types of relationships:

Green: The Lover



GREEN: The green-bordered cards represent "The Lover" StarType family. They take on the role of the lover, the observer and annotators, and the caretaker of the relationship.

Examples of classic green-bordered StarType patterns include the Grand Trine (#60), Kite (#5), Basket (#21), Wedge (#2), Mystic Rectangle (#4), and others.

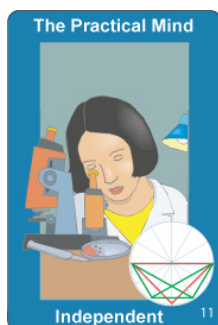
Red: The Loved One



RED: The red-bordered StarType cards are reserved for the "Loved One" family, the ones who are watched, cared for, and observed. These are the StarTypes with all the charisma. They like attention and usually take on the role of the watched - the Loved One.

Examples of classic red-bordered cards include the T-Cross or T-Square (#1) and the Grand Cross (#3).

Blue: Independent



BLUE: Some chart patterns have both roles in a single natal chart, the role of the Lover and the Loved One. When both qualities ("Loved One" and "Lover") appear in the same chart, these are the "Independent" StarTypes, and their borders are blue. They can go both ways. In some relationships they take on the role of the Lover, but in others they assume the role of the Loved One. They are somewhat self-contained.

Examples of classic blue-bordered cards include T-Cross & Grand Trine (#7), Grand Cross & Grand Trine (#12), T-Cross & Wedge (#10), and others.

Rose: Multi-relationship



ROSE: And last, there is a small group of StarTypes that demand a lot of contact and relations, called appropriately the "Multi-" or "Many-Relationships" StarTypes, which have rose colored borders.

Examples of classic rose-bordered cards include Within-a-Trine (#36) and Within-180 (#38).