

The Cosmo Natal Report for

**Johnny Depp**

June 9, 1963

8:44 AM

Owensboro, Kentucky

Calculated for:

Standard time, Time Zone 6 hours West

Latitude: 37 N 46 27    Longitude: 87 W 06 48

Positions of Planets at Birth:

|         |    |     |    |          |    |     |    |
|---------|----|-----|----|----------|----|-----|----|
| Sun     | 18 | Gem | 03 | Pluto    | 9  | Vir | 38 |
| Moon    | 13 | Cap | 49 | N. Node  | 20 | Can | 38 |
| Mercury | 25 | Tau | 17 | Asc.     | 12 | Leo | 26 |
| Venus   | 26 | Tau | 06 | MC       | 3  | Tau | 22 |
| Mars    | 3  | Vir | 13 | 2nd cusp | 4  | Vir | 26 |
| Jupiter | 13 | Ari | 59 | 3rd cusp | 1  | Lib | 07 |
| Saturn  | 23 | Aqu | 05 | 5th cusp | 8  | Sag | 52 |
| Uranus  | 1  | Vir | 35 | 6th cusp | 12 | Cap | 44 |
| Neptune | 13 | Sco | 25 |          |    |     |    |

UniverSoulLight Consulting

Tarpon Springs, FL, USA

UniverSoulLight@gmail.com

www.UniverSoulLight.com

## **Chapter 1: How You Approach Life and How You Appear To Others**

*Leo Rising:*

Ferociously proud and somewhat vain, you like to be impressive and to be seen as Somebody Special. You are not timid, meek, or self-effacing, and are rarely content being in the background or in the subordinate position. You are a natural leader, and do not take orders from others very well. You must have something of your own, something creative - be it a business, a project, a home or whatever - that you can develop and manage according to your own will and vision. Whatever you do, you do it in a unique, dramatic, individual way. You like to put your own personal stamp on it.

You also have a very strong sense of dignity, self-respect, and personal honor and are deeply offended if someone treats you in a humiliating or dishonorable way. You will rarely confront the offender - you are too proud to do so - but you will lose your affection and respect for them. You dislike pettiness and hate to be snubbed or ignored.

You admire others who are strong individuals like yourself. When you befriend someone, you are tremendously loyal, sincere, and willing to go to extraordinary lengths to make that person happy. You are very giving and generous, but your gifts are never anonymous - you expect recognition and appreciation for them. You also expect the intense loyalty that you offer to your dear ones to be reciprocated. However, you often have trouble working with people who are as strong as yourself, for you do not really cooperate or share the leading role very easily. If you are not in the leading role, you aspire to be and will compete with the person who is.

You have great heart and courage, and people often look to you for strength, encouragement, and affirmation. You always have your best face forward and rarely allow others to see you hurting, disheartened, or vulnerable. You also have a very strong need for love, admiration, appreciation, and praise, although you don't like others to realize just how important it is to you.

Your outlook on life tends to be very personal and rather self-centered. Your own self-expression, self-actualization and self-realization interests you more than anything else. You feel that if you do your best where you are, the rest of the world will take care of itself.

## **Chapter 2: The Inner You: Your Real Motivation**

### *Sun in Gemini:*

You are, in many ways, an eternal child. Your mind is bright, alert, curious, flexible, playful, and always eager for new experiences - and your attention span is often quite brief. You grasp ideas quickly and once your initial curiosity has been satisfied, you want to go on to something else. You crave frequent change, variety, meeting new situations and people.



It may be hard for you to decide just where your talents and true vocation lies, for you have a multitude of interests and are loathe to limit yourself by concentrating on just one. You are easily distracted by all of the other fascinating possibilities. Your curiosity and restlessness propel you into many different experiences in life, and you are willing to taste or try anything once. Doing the same thing over and over again, even it is something you do well, is real drudgery for you.

You live in your head a great deal - reading, observing, thinking, spinning ideas around - and you need mental stimulation every bit as much as you need food and drink. In fact, if you had to choose between a good book or movie and a good lunch, you would very likely choose the former. You have a creative mind and often live by your wits.

You are also a very social creature, with a strong need to communicate and to interact with people. You enjoy using and playing with words and have a real flair for getting your ideas across in a clever, interesting, articulate manner. Writing or speaking are areas you have talent for.

You also have a rather light and mischievous sense of humor, and often do not take anything too seriously. Though you crave emotional involvement, it is hard for you to achieve it, for you are frequently unwilling to commit yourself to anything, to take responsibility, or to limit your personal freedom and mobility.

Your happiness lies in using your creativity and your language skills to communicate something meaningful, to teach, inspire, or bring people together. You have an unbiased mind and can usually offer a fresh, clear, uncluttered perspective. Your faults are your lack of constancy and persistence, and your tendency to overlook or ignore deep emotional issues and other people's feelings.

### *Sun in 11th house:*

Leading groups and classes, and being involved in community efforts, social activities, events or movements are areas where you really shine and express your creativity. An awareness of politics or the larger social impact of individual actions is natural to you.

### Chapter 3: Mental Interests and Abilities

#### *Mercury in Taurus:*

Your mind operates in a very deliberate and methodical manner and you dislike being rushed or forced to give an opinion before you have thoroughly ruminated and digested an idea. You are also difficult to influence once your mind is made up.

Though slower to grasp new concepts or learn new skills, you are patient and persevering and, in fact, often become quite adept at whatever you put your mind and hand to, for you are willing to devote much time and attention to it. You succeed not so much because of your mental brilliance, but because you have the ability to concentrate and follow a project through to its completion. You have an aptitude for singing or drawing.



#### *Mercury in 10th house:*

You think a great deal about your career, your reputation and public image, and the way you make a contribution or impact on the world at large. Public speaking or communications of some other kind is likely to be an important aspect of the work you do.

#### *Mercury Conjunct Venus:*

You appreciate aesthetics and have a fine sense of form, design, and beauty. You could develop considerable technical skill as an artist, designer, craftsman, or creative writer. You could also sell objects of beauty - artistic products, cosmetics, jewelry, etc.

You have the ability to please and harmonize well with others and tend to ameliorate relationships between people. Your sense of humor, tact, and personal charm are of great benefit to you in any work with people on a one-to-one level.

#### *Mercury Square Saturn:*

You have an aptitude for solving difficult mental problems due to your careful, methodical approach, attention to detail, and tenacity in following a matter through to its conclusion. You have good powers of concentration and enjoy studying and thinking in solitude. You can get wrapped up entirely in your own thoughts and completely engrossed in some small detail. You are slow and cautious, but extremely thorough in your work. Conservative and something of a skeptic, you may be narrow-minded or closed to any idea which has no concrete proof or scientific verification. You prefer dealing with facts rather than abstract speculation. You may also be distrustful or fearful of anything you cannot understand with your rational mind. You are well-suited to work in research or any field that requires careful study and thought.

## Chapter 4: Emotions: Moods, Feelings, Romance

### *Moon in Capricorn:*



Serious and responsible, you try to carry the world on your shoulders and rarely let others know that you need help and support. You deny or ignore your own emotional needs and feel that others will not accept you if you appear "weak". You are especially uncomfortable with emotional dependency, and will tell yourself and others (even children) not to be a "baby". You need to accept that no one is self-sufficient all the time, and to be gentler with your "childish" emotional needs and wants. To others, you may appear to be rather hard-nosed and tough, with a businesslike attitude toward their personal concerns and feelings. Actually, no one is a truer friend. Your feelings and loyalties run deep, but you often do not let people

know how much you care. You also need to learn to relax, enjoy yourself, and play sometimes.

### *Moon in 6th house:*

You have a sympathetic nature and instinctively reach out to people in need of help. You also have a deeply ingrained tendency to want to improve or "fix" other people's lives, which can be annoying to the person who has no desire to be changed or "helped" in this way. For you, affection and caring must be expressed in tangible acts or service of some kind.

### *Moon Square Jupiter:*

You have a buoyant, cheerful disposition and reach out to others in a warm, open, friendly way. Your emotional generosity and lack of pettiness is well known among your circle of friends, and people often seek you out for help, sympathy, or advice. You are always willing to overlook others' faults, and you sometimes overdo your charitableness.

### *Moon Trine Pluto:*

You enjoy emotional intensity and are attracted to the mysterious, the unknown, and to dangerous or challenging experiences which draw on all of your inner resources. You are able to handle an emotional crisis very well, and you are interested in the deep roots of emotional problems and how to cure them. You insist on bringing feelings between people out into the open, for you want real closeness and intimacy with others, without barriers or secrets.

### *Moon Sextile Neptune:*

The beauty and harmony of your surroundings has a very powerful effect on your emotions. You are very sensitive and cannot stand to be in an atmosphere where there is discord or dissonance. Gentle, kindhearted, and peace-loving, you will give or sacrifice much in order to avoid a fight and to "make everyone happy".

### *Venus in Taurus:*

In love, you are steadfast and loyal, especially if you have a warm, demonstrative partner. You are very sensually oriented and need lots of touching and physical affection. You enjoy being pampered with a good meal, loving massage, or other sensual delights. You are a wonderful lover, very attentive to the comfort and enjoyment of the one you love. You are tremendously responsive to beauty and physical appearances, and the physical attractiveness of your partner is very important to you.



### *Venus in 10th house:*

Promoting beauty, the arts, or entertainment can make you very happy. You want to contribute something positive and loving to the world at large and you want to be recognized for your beauty, artistic gifts, or loving generosity. You may "marry" your work - that is, be more involved in your career than in your private life. You are a natural hostess or diplomat.

### *Venus Square Saturn:*

You are serious and find it difficult to enjoy yourself in a lighthearted, open and playful way with others. You rarely do something purely for pleasure, and can be very close-fisted and parsimonious. Perhaps due to painful separations in your early life, you are very cautious about becoming close to people and sharing your feelings. Though you crave love and affection, intimacy is difficult for you. You may become romantically involved with people who do not value you or treat you well. You need to learn to love and value yourself before you will find happiness in love.

## **Chapter 5: Drive and Ambition: How You Achieve Your Goals**

### *Mars in Virgo:*



You are a perfectionist and have high standards for your own work. You often feel that if you want something done right you must do it yourself, for others do not do as thorough a job as you do. Doing a task well is very important to you, and you may labor over minute details that others wouldn't bother with. You strive for accuracy, efficiency, and precision, and you become very irritable when things are not done "right".

On the other hand, you can become so much of a perfectionist and so self-critical that you will not even attempt many activities and projects, feeling that your efforts simply won't be good enough. You are usually modest and realistic in assessing what you can accomplish and, if anything, you underestimate yourself. Of course, practice makes perfect, and if you do apply yourself diligently in some area, you gradually gain self-confidence as you master skills and develop expertise.

You conserve your energy and pace yourself so that you do not waste or diffuse your efforts. An unwillingness to take risks or venture from the beaten track can sometimes limit your opportunities. In short,

you may not aim high enough and settle for too little in life.

#### *Mars in 1st house:*

You are a doer and an achiever. Energetic, courageous, and often impatient, you will forge ahead with your plans regardless of others' reservations. In fact, you often feel other people get in your way and you prefer working on your own. You are active, assertive, and rather competitive as well.

#### *Mars Conjunct Uranus:*

Dynamic, self-willed, and fiercely independent, you have extraordinary drive and energy. When you want something, you want it NOW, and you act quickly, impulsively, and decisively. Your impatience inclines you to be abrupt with people and reckless. You need a great deal of personal freedom to do things in your own way and do not happily conform to schedules, rules, or regimes imposed by others. You are intolerant of authority and can be very rebellious. You are very frank with others, sometimes brutally so. You may have an explosive temper. High-strung and often nervous and tense, you find it difficult to slow down, pace yourself, or relax. You are always on the go. You are restless, daring, and experimental.

#### *Mars Conjunct Pluto:*

When you want something, you go after it with passionate zeal and are sometimes so driven by your desire that you lose all objectivity. You get so deeply involved in whatever you are pursuing that you become one-sided, even fanatical. Strong-willed and stubborn, you insist on having your way no matter the cost. You are fascinated with power. You often try to overpower anything or anyone you perceive as an obstacle, if not physically then by the force of your will. You can be ruthless and impersonal when it comes to achieving your ambitions and goals in life. You have enormous energy and are capable of extraordinary effort and great achievement. You can also become a compulsive workaholic.

## **Chapter 6: Other Influences**

#### *Jupiter in Aries:*

You believe strongly in the power of positivity and in each individual's ability to make life anything desired through one's own initiative and effort. The more you rely on yourself, the better you feel, and you find it difficult to ask for or accept outside help. The joy of competing (and especially winning!) runs deep in you.



#### *Jupiter in 9th house:*

You are very open-minded and deeply curious about distant places and ways of thinking and living that are different from your own. The urge to travel widely and to experience as much of the world as possible is very strong in you. The study of philosophy or religion also interests you a great deal. You benefit from your contact with other cultures, and you may be involved in linking those who are far apart geographically or philosophically.



### *Saturn in Aquarius:*

You have an innate distrust of groups and/or a cynical attitude toward society that may leave you feeling out of step and unable to participate in activities with your peers. Overcoming a sense of aloofness and alienation from others is an important task for you.

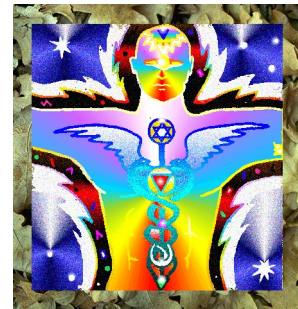


### *Saturn in 7th house:*

You take your commitments to others very seriously, especially in close one-to-one relationships. Your strong sense of responsibility to the other person makes you a trustworthy and dedicated partner, but you often feel that marriage or any binding commitment between yourself and another person is too restrictive and burdensome, and thus seek to avoid it. Close relationships may be more work than pleasure for you and it may seem that you are always "working on" your marriage rather than enjoying it. You will persevere and ultimately grow through the process, however.

### *Uranus in Virgo:*

You are part of a 7 year group of people who employ their skills and creativity to bring about a great deal of practical reform in education, medical care, and other social services. Your innovations are not radical or unusual, but they are usually effective.



Your generation also has a curious mixture of both conservative, ethical people, and rebellious, disruptive people. There seems to be little middle ground for your age group, and you swing to one extreme or the other. The conservative people strive to reinstate strict moral standards, want to swiftly punish criminal behavior, and strive to highlight the importance of old-fashioned values in our lives, laws, and overall life style. On the other hand, the rebellious people of your generation are angry at the established way of doing things and act in a defiant, crude, and coarse manner.

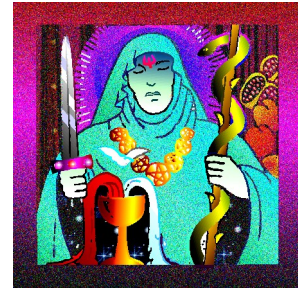
### *Uranus in 1st house:*

You are an unconventional and innovative person, and you are seen as a rebel, reformer, or highly unusual in your manners, appearance, or attitudes. You enjoy being unpredictable, and you do not conform to the standards that other people have set. Above all, you are an individual, and you do what you please regardless of customs and norms. Your environment and life circumstances may change frequently and abruptly.



### *Neptune in Scorpio:*

You are part of a 14 year group of people that have very intense psychic sensitivity and imagination. Your age group is very attracted to the strange, weird, and unusual. The sense of the macabre and bizarre is strong, and this is reflected in much of the music, art, and fashions of your age group. Novels and movies with mystery and chilling suspense are also popular with your age group. Emotional depression, drug use, and suicide are likely to be relatively high in your age group. There is also a deep mystical sense, and Eastern religions and meditation are very attractive to your age group.



### *Neptune in 4th house:*

Your childhood and early home life were colored by a great deal of confusion or by people with unusually active imaginations, aspirations, or fantasies. It is difficult for you to see your childhood and your relationship with your parents in a clear, realistic light. You may search for the ideal, loving home you wish you had, or believe you had, when you were a child. Finding inner peace and a sense of emotional security within yourself is important to you.

### *Neptune Sextile Pluto:*

The entire generation to which you belong has tremendous opportunities for spiritual rebirth and awakening. This will not be forced upon you or precipitated by unavoidable events, rather it comes from an inner yearning and a natural propensity to seek the depths.

### *Pluto in Virgo:*

You are part of a 15 year group of people that are driven by the need to find an ethical standard and a clear sense of what is right and what is wrong. There is a subconscious drive to straighten out all the world's evils and create a world of perfect order. There is a feeling of repulsion to anything ugly, dirty, or grotesque. Oddly enough, there is also often a fascination with these very things that are so distasteful, and often a feeling of hopelessness and despair about the world's condition.



These inner, emotional and conflicting qualities are reflected in the attitudes and life styles of your generation. Most people of your age group are conservative and ethical, and a small minority goes to the opposite extreme and relishes being strange or unusual in appearance, and sloppy or even grotesque in manners and appearance. There seems to be no middle ground for your generation. Usually, the rebellious type of behavior comes out during adolescence, and tends to subside thereafter, and your age group tends to be very conservative in later life.

Your age group is not very good at compromising and tends to have strong ideas about what is right and what is wrong. There is a strong feeling that you must extinguish evil in the world. Certainly, fostering good works is very commendable, but a categorical and simple-minded response to complex issues is not helpful. Your age group will undergo great transformations in attitudes regarding Good and Evil and will swing to great extremes. Your generation will also make great contributions in the areas of medicine and nutrition, ecology, and

education.

*Pluto in 2nd house:*

You are likely to have a fixation on money, wealth, and material resources. You may totally renounce material desires and ownership, or become obsessed with having, owning, and accumulating. Your attitudes towards owning, keeping, and sharing will undergo major changes in your lifetime, and your fortunes are likely to run very hot or very cold.