

Star★Types

by Michael Erlewine

C O M P A T I B I L I T Y



StarTypes Compatibility Report for:
Chart Report-Sample and Sample Chart-Report

This reading compliments of:

Chart Compliments of:
UniverSoulLight
Consulting Inc.
UniverSoulLight.com

Welcome



Welcome to StarTypes, your personal astrology report written and illustrated by astrologer/author Michael Erlewine who, with over 40 years of experience in astrology, has written some twenty-some books on astrology and dozens of computer astrological programs. Erlewine writes:

"I have lectured, taught classes, and done private consultations for more years than I want to think about. What I have found works best is a one-to-one presentation of the astrological chart - your personal astrology. In the StarTypes reports, I have tried to do just that: walk you through what is most important about your astrology chart, step-by-step, just as I would if we sat down together for a chart reading. StarTypes Reports are illustrated and easy to read. After all, they are all about you!"

Patterns in the Sky



StarTypes astrology is both ancient and modern. It is ancient, because it uses the traditional natal chart that astrologers have used throughout history. It is modern because it also takes advantage of what astronomers have learned about the heavens and our solar system in these modern times. The result is a unique combination of ancient and modern astrology that provides a unique perspective on your particular birth chart and therefore your life. This is how it works:

StarType analysis plots large-scale planetary patterns as seen from Earth and compares those patterns to corresponding patterns astronomers see functioning throughout our entire solar system. StarTypes charts not only the outer circumstances of your birth (your personality and Karma), but also the internal and spiritual qualities embedded in that same moment, your inner motivation, what has been called your Dharma or Life Path. The result is an enhanced perspective that in effect amounts to a stereo image of your birth moment and chart, looking inside and out.

StarTypes analysis offers a very complete perspective on your birth moment, with insights into what talents you naturally have, how those talents might be used, as well as your relationship role with partners, romantic and otherwise. Check it out. What follows is your own StarType report. I hope you enjoy it.

Michael Erlewine, Author of StarTypes



StarType for Chart

The heavens above and surrounding us are in constant change as the Sun, Moon, and planets move in their orbits to create vast kaleidoscope-like patterns in the sky, what has been rightly called "The Cosmic Dance." StarType analysis sorts through these many changing patterns and isolates the strongest and most pronounced pattern in effect at the moment of your birth. This cosmic pattern or archetype is your "StarType," and it best represents what is happening in the heavens at the moment of your birth. All in all there are some sixty major StarType patterns that have been recognized, and each represents a particular kind of individual and approach to life.

Your StarType is more than just your personality and the circumstances in which you happen to find yourself in life. It also describes who you are at heart, the real inner you behind all that is going on the outside, plus your possibilities - how you look at and approach life. StarTypes reveal the 'you' as only your closest friends know you, as you know yourself. What follows is a description of our StarType.



This StarType:

First: Chart is a rare bird. This StarType seldom comes up, and it is probably the single most useful (and used) of them all, she should prepare to be accessed. Folks like Chart are born with information somehow embedded in their very physical fabric, information of enormous use to others, and the world they find themselves living in. She is one of these and the keyword for this StarType is 'seminal,' so take note. Chart's influence will be felt by everyone who comes to know her and almost everything she touches will bring results, but not always for her, personally.

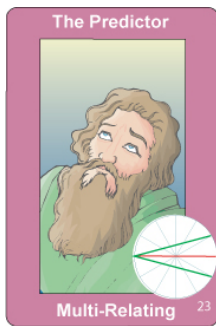
And this too is important: Chart's gifts doesn't depend on what she thinks or says, not even in how she appears or what she does. Think about that for a moment. It is what we ARE that is important and the information (if we can call it that) that Chart carries embedded in her very genes and self. Chart has only to make herself available and helpful to others for them, and whatever they represent, to benefit and take advantage of what she carries locked in her makeup. Sounds like a sci-fi film, right? Sorry. Let me try to say it more simply: Chart communicates, by her very nature and presence, information and ideas that activate and stir up the general process of life - start things. Think "catalyst." From contact with her, ideas arise and come into the mind and thus (eventually) into being through mere proximity to her. Again: this is non-verbal. It does not matter if Chart is nice or not nice. It just happens. She is a catalyst.



StarType for Sample

The heavens above and surrounding us are in constant change as the Sun, Moon, and planets move in their orbits to create vast kaleidoscope-like patterns in the sky, what has been rightly called "The Cosmic Dance." StarType analysis sorts through these many changing patterns and isolates the strongest and most pronounced pattern in effect at the moment of your birth. This cosmic pattern or archetype is your "StarType," and it best represents what is happening in the heavens at the moment of your birth. All in all there are some sixty major StarType patterns that have been recognized, and each represents a particular kind of individual and approach to life.

Your StarType is more than just your personality and the circumstances in which you happen to find yourself in life. It also describes who you are at heart, the real inner you behind all that is going on the outside, plus your possibilities - how you look at and approach life. StarTypes reveal the 'you' as only your closest friends know you, as you know yourself. What follows is a description of our StarType.



This StarType:

Sample has a StarType with a real sense of striving and yearning to complete or resolve the situation - whatever is at hand. Over time, this need for resolution, this sense of immanent resolution, of always expecting something, of waiting could manifest almost as a waiting for the other shoe to drop, even a sense of premonition at best, and apprehension and even foreboding about what is to come - the future in general - at worst. The concept to grasp is this openness or expectancy for something to happen that will resolve or relieve this expectancy. Also: an intense drive to interact, almost provoking a response.

Approach to Relationships



Approach to Relationships - Chart



Relationships are not only important to Chart, but are of crucial importance. By nature, she is intuitive (perhaps even psychic at times), very much feeling her way along and through life by using her gut sense, and whatever hunches she may have.

Another way of saying this is: Chart sees the trees way more than the forest. She hungers to get more perspective and to better grasp the "big picture." To help with this, relationships come to the rescue. Since she is strong in intuition and natural savvy, she would benefit from partners that can bring her some of the overall perspective that she likes, in particular the green StarTypes, like #5 and #60. But any green type will probably bring some benefit.

Relating with these green StarTypes, perhaps even working closely with them, in a business or personal way can help Chart develop better overall vision, perspective into her life, her capabilities, and what best to do with her life - what route to take.

Approach to Relationships



Approach to Relationships - Sample



As for relationships, Sample would not naturally like the roll of the loved one, the object of affection. Instead, he would tend to assume the roll of lover, taking care or overseeing the relationship. And, although that is the closest to a standard relationship role for him, even that may prove a little unstable. There is a strong need in Sample to learn, an urge to try out new things, to perhaps travel, to meet people and, in general, always be into something new. He seems to grow and learn about himself, when he is covering new territory. In some cases, he may even provoke or evoke reactions, cause situations to come about that he can be involved in and learn about.



Things Are Not Always What They Seem - Chart

Things are not always what they seem, especially when meeting someone for the first time. How to those around you see you? Are you a "What You See Is What You Get" type or are you a "What You See is Not What You Get" type. Are you different once folks get to know you? StarTypes has way of measuring the difference.

On the following page is a comparison of the traditional astrology chart of the outer appearances of this individual (personality), the way this person comes across AND the chart of their inner Self (Dharma chart), the individual as they are when you come to know them better. This will give you an idea if what you see is in fact what you get.

Your Inner and Outer StarTypes



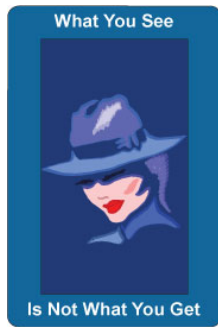
Inner StarType



Outer StarType

Above find your inner and outer StarType cards. Perhaps the more important of the two is the inner StarType, the one on the left. This is what is called your Dharma of Life-Path Chart. It is who you are inside, as people get to know you. This is your heart essence, how you function in this world.

On the right is the chart of how you appear to others, your personality, the way you come across upon first contact - the initial impression. These two cards can be similar in type and function or very different. If the border color of the cards is the same (green, red, blue, or rose), then you are more-or-less how you appear, that is: what you see is what you get. If they are different, colors, then you may be quite different on first impression than you are when people get to know you. In that case, what you see is not what you get.



StarType Appearances

You Are NOT What You Appear To Be

On the surface Chart appears Independent, sometimes a little distant. Very strong mind, able to use words and ideas with ease. Broad vision, and very practical. Gets things done..

Appearances aside, Chart in fact is Warm, gregarious, and friendly, the life of the party, and the object of attention much of the time - a people person..

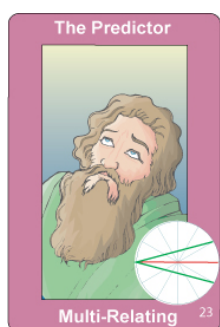


Things Are Not Always What They Seem - Sample

Things are not always what they seem, especially when meeting someone for the first time. How do those around you see you? Are you a "What You See Is What You Get" type or are you a "What You See is Not What You Get" type. Are you different once folks get to know you? StarTypes has a way of measuring the difference.

On the following page is a comparison of the traditional astrology chart of the outer appearances of this individual (personality), the way this person comes across AND the chart of their inner Self (Dharma chart), the individual as they are when you come to know them better. This will give you an idea if what you see is in fact what you get.

Your Inner and Outer StarTypes



Inner StarType



Outer StarType

Above find your inner and outer StarType cards. Perhaps the more important of the two is the inner StarType, the one on the left. This is what is called your Dharma of Life-Path Chart. It is who you are inside, as people get to know you. This is your heart essence, how you function in this world.

On the right is the chart of how you appear to others, your personality, the way you come across upon first contact - the initial impression. These two cards can be similar in type and function or very different. If the border color of the cards is the same (green, red, blue, or rose), then you are more-or-less how you appear, that is: what you see is what you get. If they are different colors, then you may be quite different on first impression than you are when people get to know you. In that case, what you see is not what you get.



StarType Appearances

You Are NOT What You Appear To Be

On the surface Sample appears Independent, sometimes a little distant. Very strong mind, able to use words and ideas with ease. Broad vision, and very practical. Gets things done..

Appearances aside, Sample in fact is Eager for contact, reaching out for contact, stirring things up, precipitating events..

Star★Types Relationships

The table on this page represents the essential StarType elements for each partner, and not just the key StarType for each. These main elements are marked with a checkmark along the left and right sides of the table, along with how many times they occur, their StarType number, and a percentage indication as to how strong the element is (100% is the strongest possible). The four basic relationship types are color-coded from top to bottom, with green for the ☐ Lover ☐ StarType, red for the ☐ Loved One ☐ StarType, blue for the ☐ Independent ☐ StarType, pink for the ☐ Multi-relational ☐ StarType, and yellow for other types.

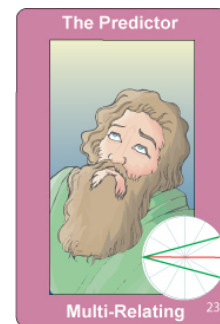
The purpose of the table is to let you see at a glance the various components of the relationship and their strengths.

Chart



	Occ.	ST#	%	Description	%	ST#	Occ.	
				Compassionate, Big Picture, Lover				
✓	1	#5	06%	Proactive, Entrepreneurial				
				Alternate View				
✓	1	#40	18%	Psychological, Mental, Complex				
✓	4	#50	01%	Caring, Mental Work				
				Little Obsessive, Recursive Mind				
✓	1	#3	85%	Seminal, Deep				
				Attractive, Gregarious, People Loving				
✓	1	#14	89%	Busy Achiever, Doing, Doing	93%	#31	2	✓
				Very Independent, Self-sufficient				
				Creative: Acts, then Thinks				
				Conceptual: Thinks, Then Does				
				Very Active Psychological, Mystic				
				Psychological, Spiritual Doer				
✓	0	#19	48%	Laser Mind, Can Think and Do				
✓	2	#6	50%	Enjoys Many Contacts, Many Places	50%	#6	1	✓
✓	1	#20	74%	Reactive, Responds to Anything				
				Yearning, Waiting, Wishing	78%	#23	1	✓
				Extra Creativity				
				Synchronicity, Coincidence	16%	#46	1	✓
✓	1	#51	50%	Completion	90%	#51	1	✓

Sample





For Chart

First: Chart is a rare bird. This StarType seldom comes up, and it is probably the single most useful (and used) of them all, she should prepare to be accessed. Folks like Chart are born with information somehow embedded in their very physical fabric, information of enormous use to others, and the world they find themselves living in. She is one of these and the keyword for this StarType is 'seminal,' so take note. Chart's influence will be felt by everyone who comes to know her and almost everything she touches will bring results, but not always for her, personally.

And this too is important: Chart's gifts doesn't depend on what she thinks or says, not even in how she appears or what she does. Think about that for a moment. It is what we ARE that is important and the information (if we can call it that) that Chart carries embedded in her very genes and self. Chart has only to make herself available and helpful to others for them, and whatever they represent, to benefit and take advantage of what she carries locked in her makeup.

Sounds like a sci-fi film, right? Sorry. Let me try to say it more simply: Chart communicates, by her very nature and presence, information and ideas that activate and stir up the general process of life - start things. Think "catalyst." From contact with her, ideas arise and come into the mind and thus (eventually) into being through mere proximity to her. Again: this is non-verbal. It does not matter if Chart is nice or not nice. It just happens. She is a catalyst.

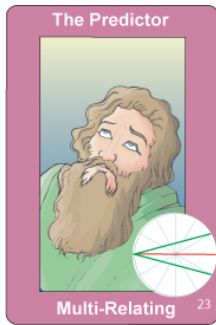
Relationships are not only important to Chart, but are of crucial importance. By nature, she is intuitive (perhaps even psychic at times), very much feeling her way along and through life by using her gut sense, and whatever hunches she may have. Another way of saying this is: Chart sees the trees way more than the forest. She hungers to get more perspective and to better grasp the "big picture." To help with this, relationships come to the rescue. Since she is strong in intuition and natural savvy, she would benefit from partners that can bring her some of the overall perspective that she likes, in particular the green StarTypes, like #5 and #60. But any green type will probably bring some benefit. Relating with these green StarTypes, perhaps even working closely with them, in a business or personal way can help Chart develop better overall vision, perspective into her life, her capabilities, and what best to do with her life - what route to take. Intuitive to the point of tunnel vision, Chart's sense of whether things feel right or wrong is profound.

Everyone who knows her benefits from this natural instinct for the truth, and she exerts a seminal influence on all she comes in contact with. The price she pays for this gift, is that she sometimes gets lost in the trees, and can't see the forest, or she has trouble seeing the big picture and remembering what this life she is living is all about. Therefore Chart can benefit from the more pure types of 'The Lover' StarType, in particular the Grand Trine and the Kite, who will help her to better understand what she is going through, who she is, and to perhaps guide her in day-to-day decisions. Look for the Grand Trine pattern, which is the large green triangle. As for the blue-bordered cards, keep in mind that they have the qualities of both the red-bordered and the green-bordered cards within their makeup. When relating to them, Chart will want to invoke the care-giving and advice giving aspect of them. She will call out the lover in them, with her being the loved one that they care for.

KEYWORDS

- Beyond words.
- Innate intuition.

- Non-verbal.
- A seminal influence.
- The Loved One.
- Charismatic.
- Center of Attention.
- Intuitive.
- Touchy Feely.



For Sample

Sample has a StarType with a real sense of striving and yearning to complete or resolve the situation - whatever is at hand. Over time, this need for resolution, this sense of immanent resolution, of always expecting something, of waiting could manifest almost as a waiting for the other shoe to drop, even a sense of premonition at best, and apprehension and even foreboding about what is to come - the future in general - at worst. The concept to grasp is this openness or expectancy for something to happen that will resolve or relieve this expectancy. Also: an intense drive to interact, almost provoking a response. As for relationships, Sample would not naturally like the roll of the loved one, the object of affection. Instead, he would tend to assume the roll of lover, taking care or overseeing the relationship. And, although that is the closest to a standard relationship role for him, even that may prove a little unstable. There is a strong need in Sample to learn, an urge to try out new things, to perhaps travel, to meet people and, in general, always be into something new. He seems to grow and learn about himself, when he is covering new territory. In some cases, he may even provoke or evoke reactions, causing situations to come about that he can be involved in and learn about. With this StarType, there is a very strong need for relationships of all kinds, and Sample can benefit from interaction with both green-bordered and red-bordered cards. **KEYWORDS**

- Yearning.
- Striving.
- Unresolved.

Relationship List



Relationships - Chart



Relationships:

Chart needs relationships.

Romantic Role:

Chart likes to take on the role of "the love one" or object of affection in a relationship.

Office Role:

In an office environment, Chart is happiest in a creative or non-management position.

Independent:

No.

Interdependent:

Yes.

Needy:

Yes, in relationships.

Relationship List



Relationships - Sample



Relationships:

Sample needs relationships.

Romantic Role:

Sample likes to take on the role of "lover" or caretaker in a relationship.

Office Role:

In an office environment, Sample prefers intellectual work and low-level management.

Independent:

No.

Interdependent:

Yes.

Needy:

Yes, in relationships.

Basic Compatibility

Naturally compassionate ■ Lack of enthusiasm
Aware of others ■ High energy
Generally kind ■ Ambitious
Solid management talent ■ Driven to succeed
Not a touchy-feely type of person ■ Grasp concepts
A bit of a dreamer ■ Pick out patterns
Thinks outside the box ■ Persistent drive
High energy ■ A bit of a dreamer
Runs to matters of the mind ■ The Entrepreneur
Is not much fun ■ Thoughtful, careful, and meticulous
Abstract ■ Not a people person
Meticulous ■ Enthusiasm
Too much theory ■ Runs cool, not warm
Appreciative of social situations ■ A good group leader
A bit of a dreamer ■ A great listener or consultant



Chart: StarType #03, "The Seed"

Sample: StarType #23, "The Predictor"

This is indeed a bit of an odd pairing, something out of the ordinary. On the one hand, we have Chart, who is natural in the role of the loved one, the one who receives attention. On the other, we have Sample, who has to assume the role of the lover, provider, and caretaker of the relationship. But Sample is not naturally suited to take up this role. Don't get me wrong. I am not saying this can't work, but only that it is an unusual relationship. While Sample has the basic aptitude for the role of the provider and caretaker, it would be in a very non-standard and unusual fashion. Sample's take on things is non-standard, and probably is out of the mainstream. At the very least, it should be different.

Friends Comparison



An unusual relationship, but not an impossible one. This can work provided there is an understanding going in of the possible limitations. Here is what needs to be kept in mind.

When it comes to relations, Chart is a one-trick pony. She only knows how to play the role of the the object of affection, and is not comfortable in the role of caretaker or care-giver. She is lovable, and not used to giving it back. This is not a fault, but simply a condition that is unchanging and unchangeable. In any relationship, Chart will naturally and always assume the objective role. And let's not forget that Sample simply cares more in this relationship, which always gives Chart leverage.

As for Sample, he is a much more ethereal type, having nothing of the more grounded and stable nature of Sample. And he tends to react more than he acts, which simply means just about every situation intrigues or provokes him. He needs a lot of activity or experience to find or get to know himself, so this is another given. How these two mix together is the question here. Sample will have to be able to (and up to it) handle and care for Chart or things will just not work out. This is not a simple thing to work out, but it can be done.

The Inner Relationships



This relationship is probably very delicate to balance at best, and ineffective at worst, for these two are coming from very different places indeed. Sample is a little bit out there, with a tendency to be somewhat impulsive, often to the point of provoking situations that are best left alone. He may have a lot of trouble balancing HI2S own life, much less helping to guide Chart's.

Chart, on the other hand, is much more stable or at least fixed in her approach to life, with a tendency to be quite self-centered and definitely very people oriented. In fact, she craves attention, is very social, and can usually be found near or at the center of any group's goings on. So how does relationship play out?

The answer may well be "with difficulty." Sample has HI2S own fish to fry and, while he has much more awareness than Chart does of his effect on other people, this experience may not translate to something that Chart can actually identify with. Chart, on the other hand, may tend to just write Sample off as ineffectual and a dreamer, someone she sees as tilting at windmills and living in a fantasy world. Working this relationship out would require compromise and understanding on both sides.

Profile Summary



Profile Summary for Chart



Chart is a rare bird, of great value to any company or venture. First, she is warm and charismatic to be around. People naturally like her and very much enjoy being with her, spending time with her. Here is a hands-on, intuitive, feel-your-way-along person, who has an innate sense of things and savvy that is the envy of others. More important perhaps, she can have an enormous effect on any project or group she plays a part in, and is a kind of natural stimulus for others, like a kind of an idea wishing-well. She is a valuable team member and worker. Chart thinks with her heart, not her head. Contact with Chart can produce real and important changes in how a project will go.

Chart can be very stubborn and almost impossible to move off a position. While brilliant intuitively, she may have problems with higher-level management, in particularly with planning, seeing the big picture in advance, scooping out the future. Chart tends to be warm and gregarious, but not always thoughtful and considerate.

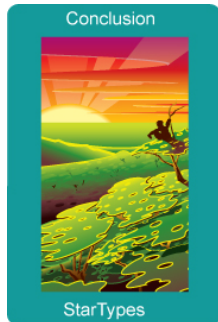
Profile Summary for Sample



While Sample would probably not be happy (or that useful) in a managerial capacity, he is perfect when it comes to being part of a workforce or group, but his talents are mental rather than physical. He is a hard-working, kind hearted, and a careful worker, who uses his brain first and then acts, rather than vice versa. In fact, thinking and working with the mind in a detailed way, or perhaps in some service-oriented capacity, providing something for others or caring for others, is perhaps the best work. Sample is good at the detail work, but not at his best with the grand plans, as he tends to see the trees, but not the forest.

Sample is very active, always eager for experience, looking to get more involved, rather than less involved. He has an endless thirst for things new, likes to go places, meet people, whatever exposes him to something different. He makes friends and acquaintances easily, maintains them and he can make a good communicator and go-between. By nature, he is thoughtful, given to detail work. Although very active, Sample tends to run a little cool when it comes to glad-handing. A better way to say this is that Sample is a mental glad-hander, meeting folks with the mind, if not the warmth of rubbing shoulder to shoulder. He can be hard to tie down and make stay put, and likes to be on the move. He may be very enthusiastic, responding to almost any new thing that comes along. At times, a bit over-reactive Sample may have a tendency to precipitate events, to cause things or people to react, for good or ill. Sample is most happy when surrounded by friends that he can look up to and receive guidance from.

Conclusion



This concludes your StarType Compatibility Report. In this report we have tried to point out not only the individual characteristics of each partner and how they might approach relationships, but also how the two partners may interface and get along. StarTypes compatibility represents the potential for the relationship and the relationship roles each of the partners naturally find comfortable. We hope you have enjoyed it.